

Sartogo Architetti

Piero Sartogo & Nathalie Grenon

*“This presentation is predicated on our belief that contemporary architecture **can** co-exist with the architectural heritage and cultural continuum.*

The projects shown here demonstrate how that belief is manifested in our work”.

Sartogo Architetti Associati

Piero Sartogo & Nathalie Grenon

"Because I am Italian, I have been and am continuously immersed in an environment characterized by centuries of architectural tradition."

As an Italian architect, our work always starts with an appreciation of the genius loci.

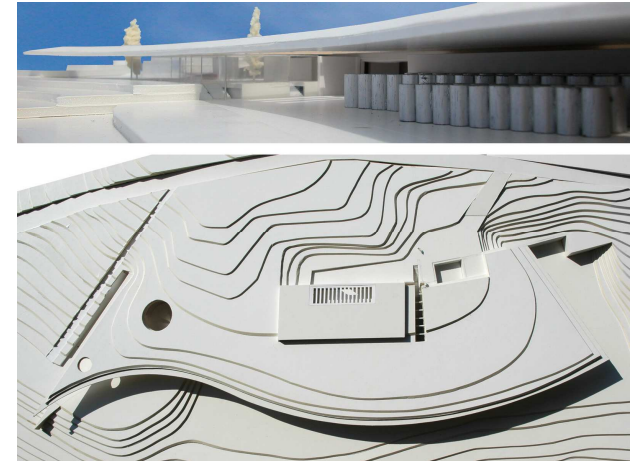
I believe that Architecture begins only when the prototype is altered and distorted by the physical and cultural context of a site."

Piero Sartogo, AIA
Architect



"As European architects with a world perspective, Nathalie Grenon and Piero Sartogo have a body of work that is about ideas which enables them to offer an important contribution and clear message to the culture of architecture."

Richard Meier, FAIA
Architect

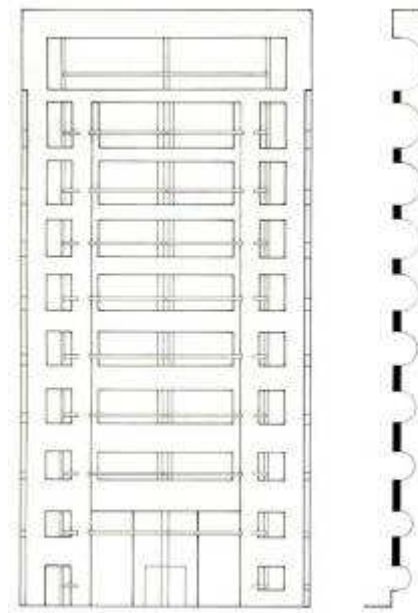
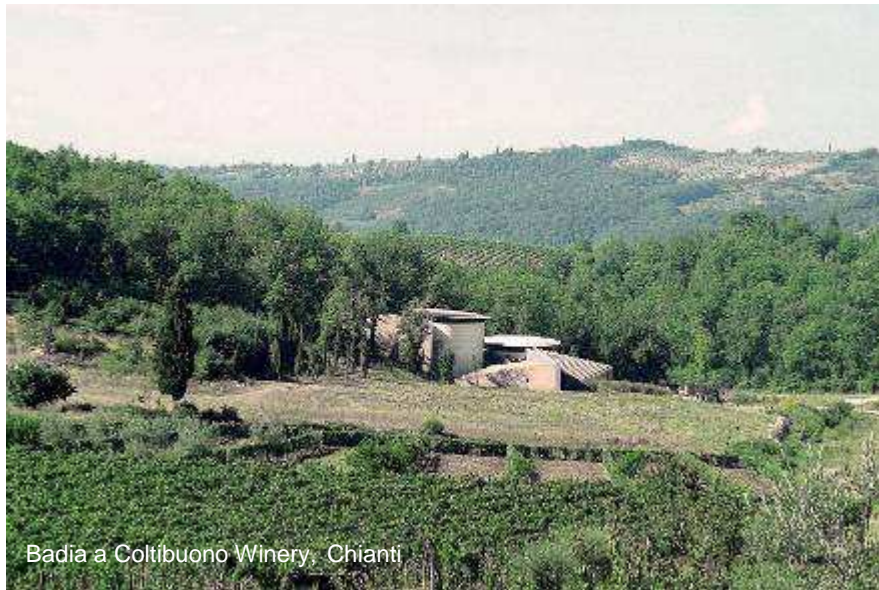


"Despite its contemporary aesthetic, the new winery clearly reveals its link with tradition, as its lines and forms are based on classical architecture. The architectural and landscaping solutions employed reveal Sartogo-Grenon tendency to propose ideas based on the uniqueness of the site and specific functional requirements. They also responded to the proprietors' passion for the making of Chianti classico and the importance of the winery for local history, building a structure which acknowledges the present but also respects the past."

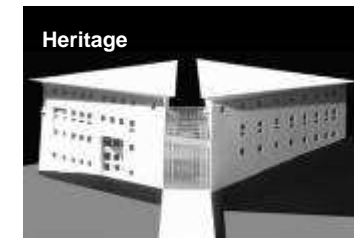
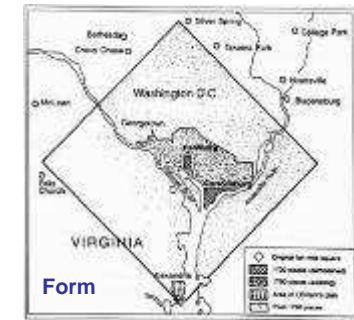
Lorenza de Medici,
owner Badia a Coltibuono Winery



Context: a passionate dialogue between ancient, old, and new.



The winery, Embassy, Bank, and Conference Center buildings are built. The Gateway project is under construction.



Sartogo Architetti Associati

Piero Sartogo & Nathalie Grenon

Context: learning from the past to build for tomorrow

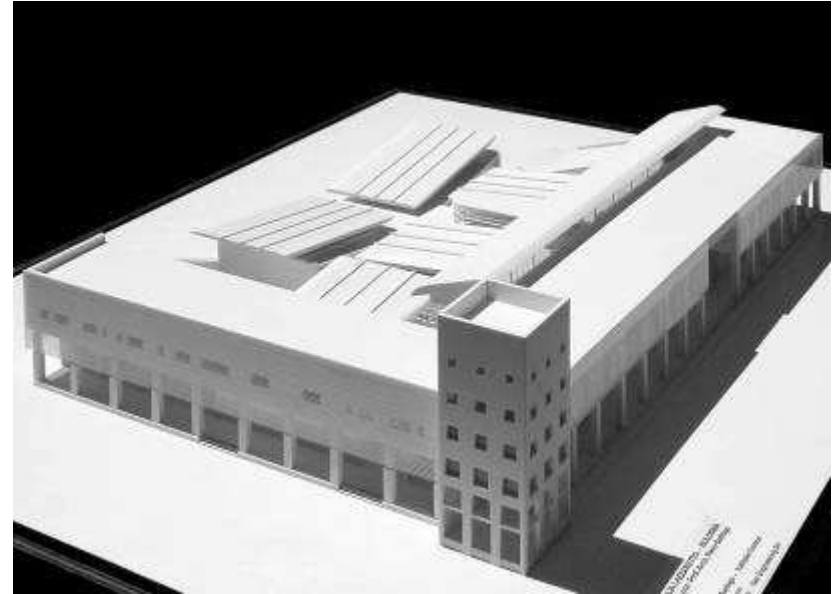
A new “urban” campus for the University of Bologna being used to revitalize a suburban sector of the city with urban design and architectural principles based on lessons of materials, scale, forms, and circulation patterns learned from the historic core.



Urban Spaces, buildings, and Landscape relief



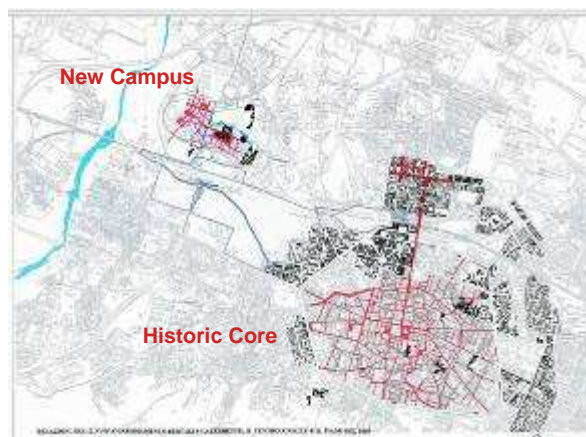
Covered walkways and Towers



The campus and buildings are in Final Design and construction.



New Urban Plan



New Campus

Historic Core

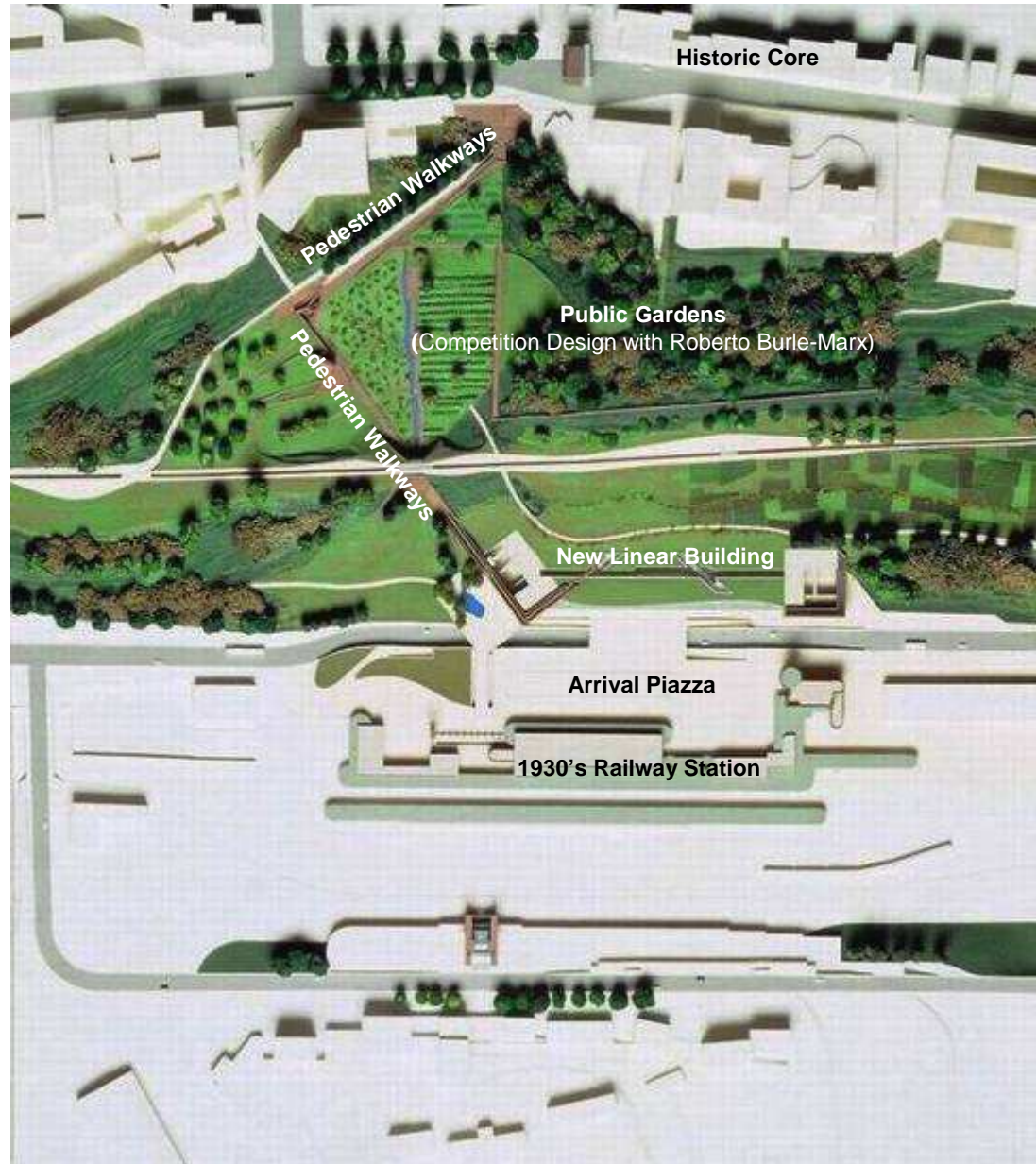


Streets that lead the eye

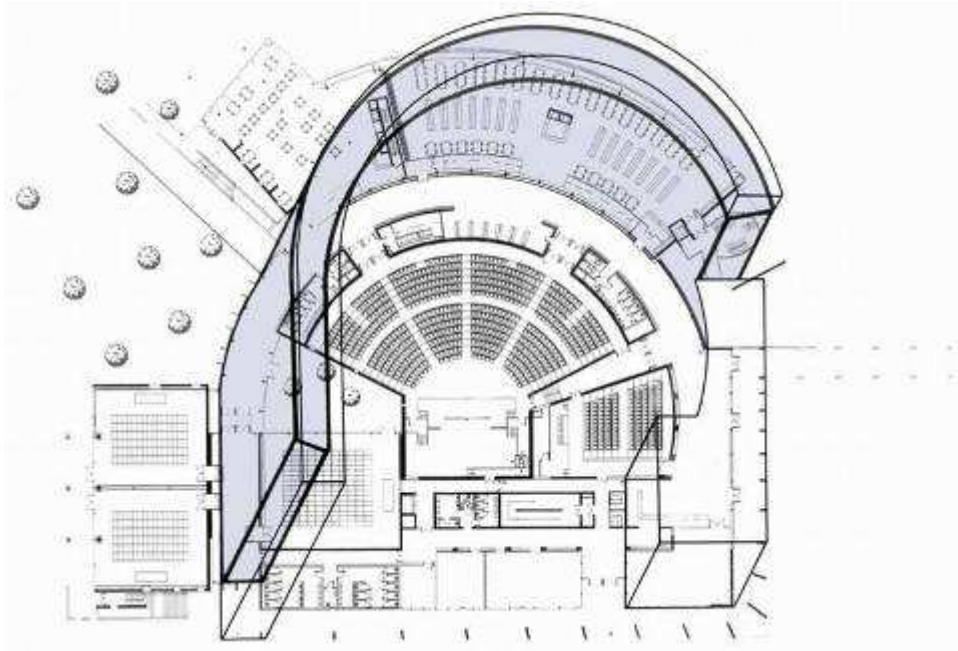
Gateway: recognition and marking of the ancient, historic, and new.



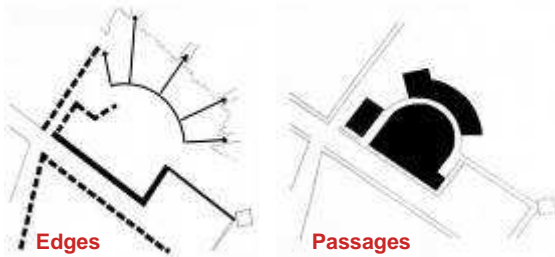
Siena Gateway Project (under construction)
The winning entry to an international urban design competition, creates a new arrival piazza, with underground parking, between the main railway station (1930's) and new linear multi-use building at the base of the hill leading to the Historic Core with pedestrian walkways and funicular railway.



Places of Assembly and Performance

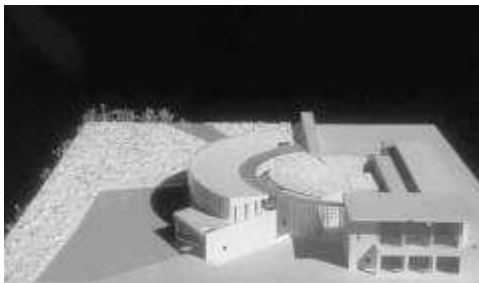


Nissan Auditorium, Rome



Assembly Hall and Library New University of Bologna

This building whose central placement is critical in forming the urban spaces and defining the landscape edges of the new campus is in the final stages of Detailed Design.



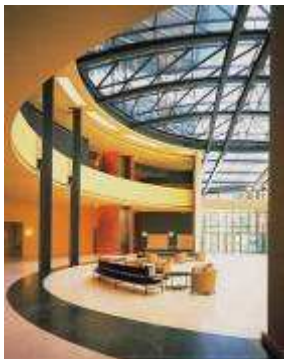
Piero Sartogo & Nathalie Grenon



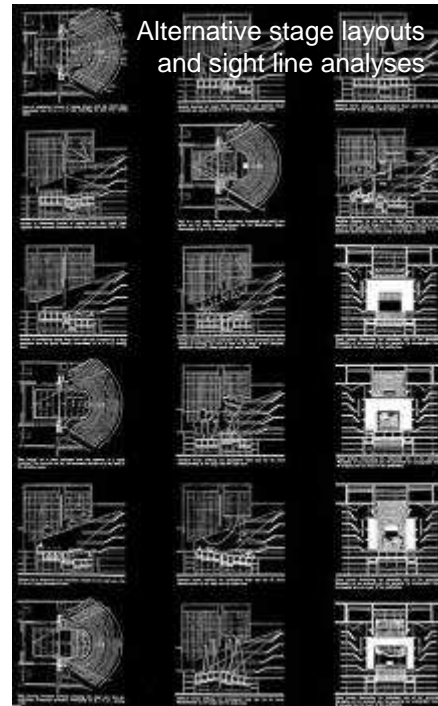
O.E.C.D. Conference Center, Paris

Sartogo Architetti Associati

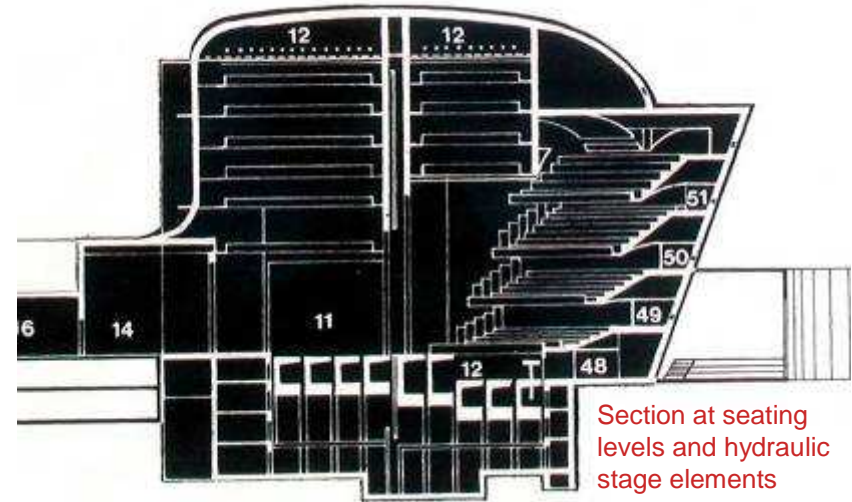
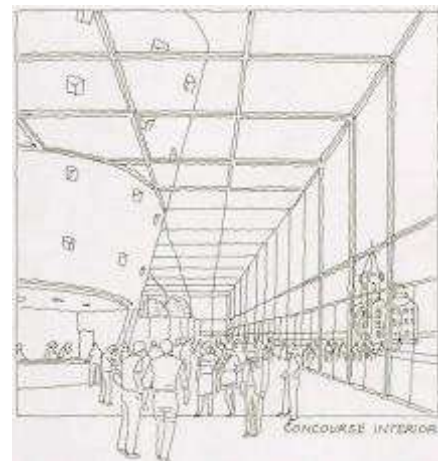
Places of Assembly and Performance



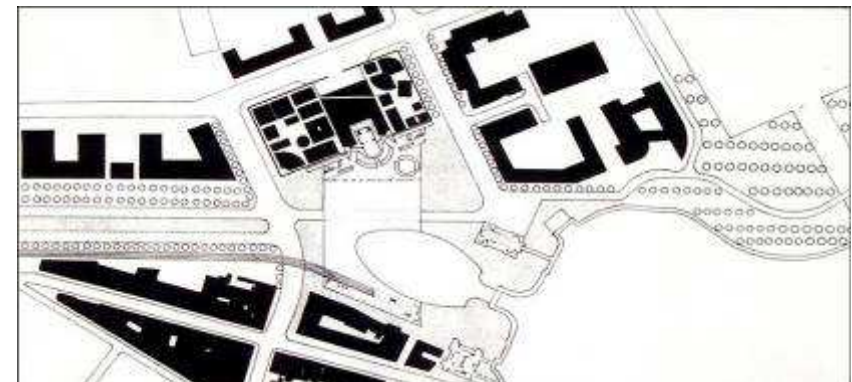
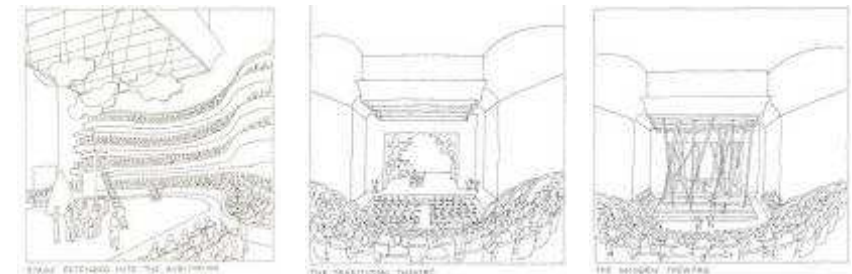
The lobby of the Italian Embassy has hosted concerts, dance recitals, and theatrical performances. Its shapes provide remarkable acoustic quality.



Cardiff Opera House
Competition entry



Section at seating levels and hydraulic stage elements



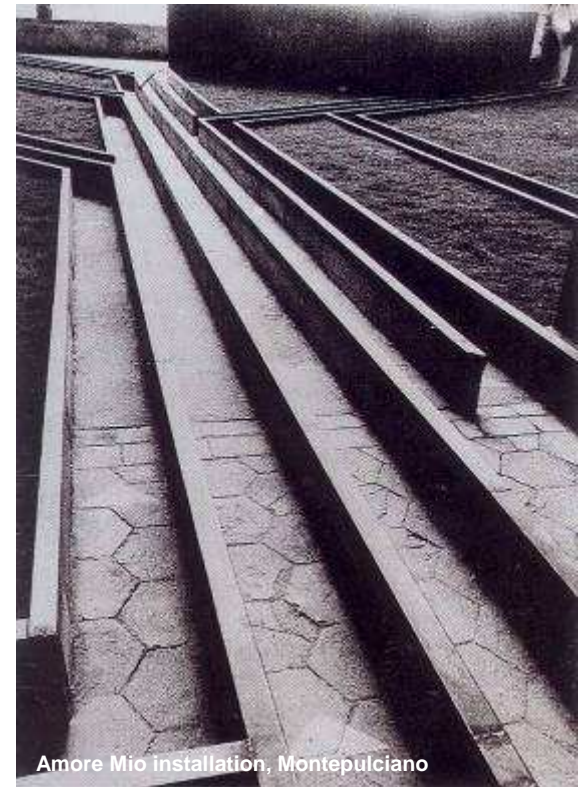
Gallery / Exhibition Spaces



Badia a Coltibuono Winery, Chianti



Italian Pavilion, Expo '92, Seville



Amore Mio installation, Montepulciano



Badia a Coltibuono Winery



Italian Embassy, Washington, DC

Gallery / Exhibition Spaces



Italian Pavilion, EXPO '92, Seville

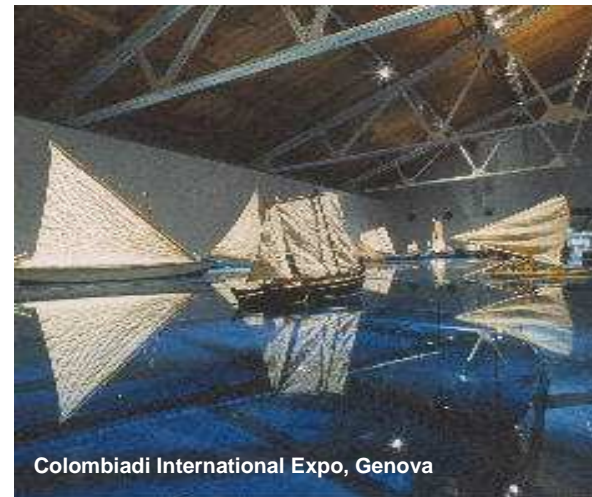


Since 1966, Piero Sartogo and Nathalie Grenon have been architects, exhibit designers, and curators for over 35 gallery exhibitions, national pavilions, and special exhibits for government agencies and private Italian and international clients. The blue sphere at EXPO '92 is a 120 seat theater. The storical sailing- boats on a blue glass are at the Colombiadi Americas' pavillion.

The public spaces at the Italian Embassy have displays of archaeological artifacts, 18th and 19th Century paintings, and the best of contemporary Italian furniture and industrial design – some by Sartogo. The lobby is used for special exhibits from sculpture to classic Italian automobiles.



Italian Embassy



Colombiadi International Expo, Genova



Italian Pavilion, EXPO '92

(theater inside)

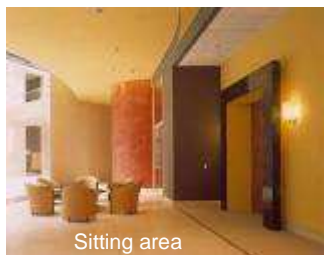


Italian Pavilion, EXPO '92

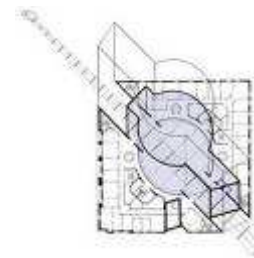
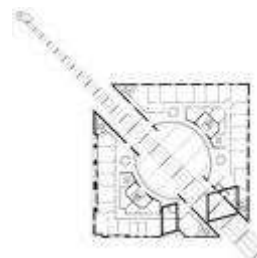
Lobby Space: The Italian Embassy, Washington, DC



Lobby - Entrance Hall - Rotunda



Sitting area



The Italian Embassy Chancery was completed in 2000. It is a four-story building with approximately 29,800 sf on each floor.

The Sartogo design was selected in an invited national competition among: Renzo Piano, Aldo Rossi, Vittorio Gregotti, Gae Aulenti, Carlo Aymonino, Antonio de Feo, and Vico Magistretti.

The Chancery includes offices for the ambassador and his staff, diplomatic personnel and consular officials, military attache and staff, an Italian Cultural Institute, and public areas – the most significant of which is the multi-level lobby-entrance hall-rotunda used as a visitor center and venue for events and displays with an adjoining café, a library and a small performance hall.

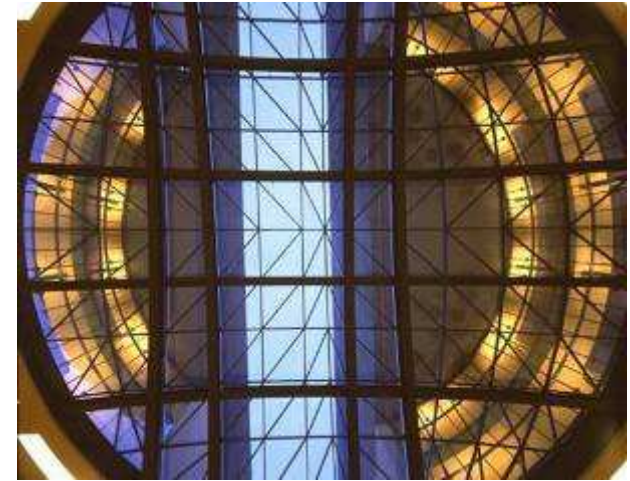
It has a national presence with grand spaces and stately form while maintaining an intimate and human scale.

It connects to its site, is respectful of its neighbors, and makes architectural reference to its Italian heritage using a contemporary vocabulary.

Its design was developed and refined working in collaboration with the Commission of Fine Arts; the program includes a mix of functions; and, its public spaces are ideal venues for concerts, exhibits, and performances.

Contemporary architecture that works.

Lobby Space: The Italian Embassy, Washington, DC



A single space – but what a space. This is a grand, light-filled, embracing arrival space where new visitors feel truly welcome.

It is large enough so that many conversations can happen at the same time and remain private.

Upper level balconies serve offices. This strategy can be used for other functions such as galleries or theaters.



Edges: architectural conversations with Streets and Landscape



The University of Virginia Center for the Arts will have two types of exterior faces and edges.

Two external faces will relate to vehicular traffic and noise.

A contrasting internal focused landscape face will relate to slower and random pedestrian movement and calm.

As their looks will be different so will their points of entry.



Materials and Details: helping buildings belong to their sites



Forms derived from inner uses with materials of natural colors that can be felt and held are design obligations and a frequent palette.



Elements that contrast do so purposely to invite questioning of the immediate context.



Materials and Details: bringing scale and humanity to a building



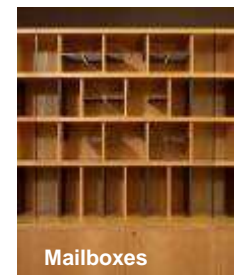
The square is a thematic reference to the original 100 sq. mile plan of Washington DC.



Exterior walls of meticulously detailed and specially cut Pietra Rosa di Asiago marble “bricks”, remarkable window arrangements, and repetitive use of the thematic square define the personality and humanity of the Italian Embassy.



Nissan Auditorium entrance, Roma



Mailboxes

Sartogo Architetti Associati
Piero Sartogo & Nathalie Grenon

Via Sardegna, 14 - 00187 Roma
+39 06 4457144
+39 06 484413
www.sartogoarchitetti.it